



APIC MINNESOTA

8th Annual APIC-MN Basic Infection Control Course April 16-18 or October 22-24, 2009

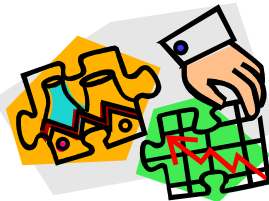
TARGETED AUDIENCE

This interactive course will offer a comprehensive foundation for professionals specializing in infection prevention in all settings of health care including: Acute Care, Ambulatory Care, Home Care, LTC and Public Health.

OBJECTIVES

Participants will be able to:

1. Establish an infection prevention program utilizing best practices, evidence based research and guidelines.
2. Describe and demonstrate the ability to use multiple resources.
3. Prioritize the duties and roles of the infection prevention practitioner in the ever changing health care environment.



CONTINUING EDUCATION CREDITS

This program has been designed to meet continuing nursing education credits. It is the responsibility of the participant to determine if it meets their needs. A certificate of attendance for **24 contact hours** will be given to each participant at the course conclusion.

INSTRUCTORS

Certified (CIC) practitioners from a variety of settings will provide the instruction. Mary Larweck, RN, MS, CIC, will facilitate the course.

TEXT

The "APIC Text of Infection Control & Epidemiology" is **necessary** to be **brought by attendees**.

(available through APIC-National) or www.apic.org

Member/Nonmember pricing:

Paperback- \$375/ \$475 , looseleaf \$475/ \$525

**If you don't have a text and are unable to purchase please contact D'Ann.*

SITES

Spring 2009

Lake Region Healthcare,
Fergus Falls, MN 56357
218-736-8319

712 Cascade St S,
JoAnn Bowman
jjbowman@lrhc.org

Fall 2009

Regions Hospital
St Paul, MN 55102
651-254-5143

640 Jackson St
Stephanie Tismer
stephanie.g.tismer@healthpartners.com

LODGING

The Best Western, The Falls Inn and Suites, will hold a block of rooms for us and hold the rooms until April 3rd. The charge will be \$75 per night. That is a small reduction in Wed and Thurs night but about a \$25 reduction on Friday night.

<http://www.visitfergusfalls.com/looding/>

Embassy Suites, 175 10th St E, St Paul is holding rooms for the October session. Call 651-224-5400 by October 1st. Ask for the BICC rate.

ASSIGNMENT

All attendees will be asked to give a 5-10 minute talk with the topic to be sent after registration.

REGISTRATION INFORMATION

Send registration form and fee to D'Ann Brosnahan. (*see enclosed form*) **Assume your registration is accepted unless otherwise notified. A \$15.00 late registration fee will be assessed after April 1st for the course.** Cancellations received after **April 7th** will not be refunded. The registration fee includes tuition, course materials breaks and lunch for each day attended. **There must be at least 12 attendees with a maximum of 20.** We reserve the right to cancel the class pending number of registrants.

APIC-MN
2500 W County Rd B Ste 102
Roseville MN 55113

Contact: D'Ann Brosnahan
Phone: 651-628-9250
Fax: 651-628-0023
Email: apicmnchapter18@hotmail.com

Basic Infection Control Course Registration Form

Please print clearly.

Spring 2009

Fall 2009

Name: _____

APIC Registration Number: _____ Title: _____

Facility: _____

Address: _____

City: _____ State: _____ Zip: _____

Participant's Cell Phone Number: _____ Facility Phone Number: _____

Email: _____

Facility Type: Acute Care Ambulatory Care Home Care LTC Public Health Other

Registration Fee: APIC Members - \$400 Non-APIC Member - \$650

Class fee for non-APIC member who joins APIC at this time—\$600 (Fee to join APIC National is \$175. Fee to join APIC-MN is \$25, so if you join APIC at this time the class is discounted \$50). Information to join APIC can be found at the following site:

[Http://www.apic.org/AM/Template.cfm?Section=Join&Template=/CM/HTMLDisplay.cfm&ContentID=11960](http://www.apic.org/AM/Template.cfm?Section=Join&Template=/CM/HTMLDisplay.cfm&ContentID=11960)

Minnesota is in Region 5. Minnesota chapter number is 18.

Add \$15 to fee if postmarked after April 1, 2009.

Make check payable to **APIC MN**, and mail to 2500 W County Rd B, Ste 102, Roseville, MN 55113

For further information contact D'Ann Brosnahan at 651-628-9250 or apicmnchapter18@hotmail.com